

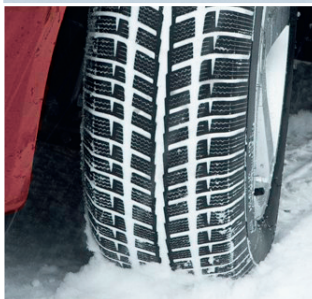

COOPERTIRES



WM-SA2

The **WM-SA2** is the latest member of the Cooper performance winter tyre family. Dedicated to delivering grip in snow, slush and wet. This addition to the Cooper range utilises Cooper's latest winter tyre technology. Designed for driving in Alpine conditions.





WM-SA2

State-of-the-art production technology: the product of Cooper's latest manufacturing methods

Performance tested against competition: in Alpine winter conditions

Meets current and future EU tyre regulations: For wet grip, clean oil and rolling resistance

Performance enhancing directional tread pattern: Utilising state-of-the-art computer technology and increased sipe density, the WM-SA2 offers improved snow, slush and wet traction

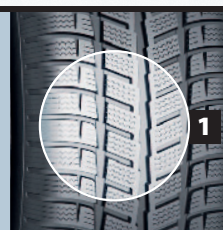
TAG – Tapered Alternating Groove Technology: Forward facing shoulder grooves and V-Slots enhance braking. Backward facing centre groove improves traction

RATING	KM/H	MPH
N	140	87
Q	160	99
R	170	106

RATING	KM/H	MPH
S	180	112
T	190	118
H	210	130

RATING	KM/H	MPH
V	240	149
W	270	168
Y	300	186

1 Cold weather tread compound: Highly loaded silica tread compound enhances snow, slush and wet grip by remaining flexible at low temperatures without sacrificing tread wear – ideal for driving in low temperatures



For speed symbols V,W & Y load capacity reductions of up to 15% apply, above 210 Km/h for V-rated tyres, 240 Km/h for W-rated tyres & 270 Km/h for Y-rated tyres. Please consult Cooper Tire & Rubber Company for further information.



WM-SA2

55 Series					
185/55R15 XL	86T	6.0	5.0 - 6.5	194	585
205/55R16	91T	6.5	5.5 - 7.5	214	632
60 Series					
185/60R14	82T	5.5	5.0 - 6.5	189	578
185/60R15 XL	88T	5.5	5.0 - 6.5	189	603
195/60R15	88T	6.0	5.5 - 7.0	201	615
65 Series					
165/65R14	79T	5.0	4.5 - 6.0	170	570
175/65R14	82T	5.0	5.0 - 6.0	177	584
185/65R14	86T	5.5	5.0 - 6.5	189	596
185/65R15	88T	5.5	5.0 - 6.5	189	621
195/65R15	91T	6.0	5.5 - 7.0	201	635
215/65R15 XL	95T	6.5	6.0 - 7.5	221	661
70 Series					
155/70R13	75T	4.5	4.0 - 5.0	157	548
165/70R13	79T	5.0	4.0 - 5.0	170	562
175/70R13	82T	5.0	4.5 - 6.0	177	576
165/70R14	81T	5.0	4.0 - 5.5	170	588
175/70R14	84T	5.0	4.5 - 6.0	177	602

SYMBOLS KEY

- SERVICE DESCRIPTION
- RECOMMENDED RIM WIDTH
- APPROVED RIM WIDTH - MIN/MAX
- SECTION WIDTH
- OVERALL DIAMETER