



COOPERTIRES



Cooper Zeon 2XS

The **Cooper Zeon 2XS** is Cooper's ultra-high performance tyre for high performance cars, the tapered tread has been designed to provide deep tread in the fast-wearing centre part of the tyre. The unique characteristics of the tyre compound gives excellent traction in both the dry and the wet, and the tyre design reduces road noise for a quieter ride.





Cooper Zeon 2XS

Tapered Tread: Puts deep tread in the centre and slightly shallower tread in the shoulders, putting more rubber in the faster-wearing central part of the tyre. The result is less weight, more even wear and improved wet handling.

Double Shoulder Tread Element: Is divided into two harmonically mated segments. The calculated stagger of the tread element reduces noise for a quieter ride.

Rim Protection: Extends beyond the rim flange protecting against rim damage when a wheel scuffs a kerb.

Optimised Tyre Profile: With its slightly-rounded mould, balances wet traction and long tread life.

W/Y-Speed Rated: Fitments to suit a wide range of high performance vehicles.

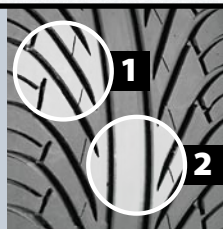
RATING	KM/H	MPH
N	140	87
Q	160	99
R	170	106

RATING	KM/H	MPH
S	180	112
T	190	118
H	210	130

RATING	KM/H	MPH
V	240	149
W	270	168
Y	300	186

1 Directional Tread Pattern: Evacuates water from the contact area.

2 Central Rib: For crisp responsive steering.



For speed symbols V, W & Y load capacity reductions of up to 15% apply, above 210 Km/h for V-rated tyres, 240 Km/h for W-rated tyres & 270 Km/h for Y-rated tyres. Please consult Cooper Tire & Rubber Company for further information.

Cooper Zeon 2XS

30 Series					
265/30R19XL	93Y	9.5	9.0 - 10.0	271	643
275/30R19XL	96W	9.5	9.0 - 10.0	278	649
275/30R20XL *	97W	9.5	9.0 - 10.0	278	674
285/30R20XL	99W	10.0	9.5 - 10.5	290	680
35 Series					
215/35R18XL	84W	7.5	7.0 - 8.5	218	607
255/35R18XL	94W	9.0	8.5 - 10.0	260	635
265/35R18	93W	9.5	9.0 - 10.5	271	643
275/35R18	95W	9.5	9.0 - 11.0	278	649
215/35R19XL	85Y	7.5	7.0 - 8.5	218	633
225/35R19XL	88W	8.0	7.5 - 9.0	230	641
235/35R19XL	91Y	8.5	8.0 - 9.5	241	647
245/35R19XL	93Y	8.5	8.0 - 9.5	248	655
245/35R19XL	93W	8.5	8.0 - 9.5	248	655
255/35R19XL	96Y	9.0	8.5 - 10.0	260	661
245/35R20XL	95W	8.5	8.0 - 9.5	248	680
255/35R20XL	97W	9.0	8.5 - 10.0	260	686
40 Series					
205/40R17XL	84W	7.5	7.0 - 8.0	212	596
215/40R17	83Y	7.5	7.0 - 8.5	218	604
235/40R17	90Y	8.5	8.0 - 9.5	241	620
245/40R17	91Y	8.5	8.0 - 9.5	248	628
255/40R17	94Y	9.0	8.5 - 10.0	260	636
275/40R17	98W	9.5	9.0 - 11.0	278	652
285/40R17	100W	10.0	9.5 - 11.0	290	660
225/40R18 XL	92Y	8.0	7.5 - 9.0	229	637
235/40R18	91Y	8.5	8.0 - 9.5	241	645
245/40R18XL	97Y	8.5	8.0 - 9.5	248	653
275/40R18	99W	9.5	9.0 - 11.0	278	677
245/40R20	95W	8.5	8.0 - 9.5	248	704
45 Series					
205/45R16	83Y	7.5	7.0 - 8.5	216	603
215/45R17	87Y	7.0	7.0 - 8.0	213	626
225/45R17	91Y	7.5	7.0 - 8.5	225	634
235/45R17	94Y	8.0	7.5 - 9.0	236	644
245/45R17	95W	8.0	7.5 - 9.0	243	652
255/45R17	98W	8.5	8.0 - 9.5	255	662
225/45R18XL	95W	7.5	7.0 - 8.5	225	659
245/45R18XL	100W	8.0	7.5 - 9.0	243	677
50 Series					
205/50R16	87W	6.5	5.5 - 7.5	214	612
225/50R16	92W	7.0	6.0 - 8.0	233	632
245/50R16	97W	7.5	7.0 - 8.5	253	652
205/50R17XL	93W	6.5	5.5 - 7.5	214	638
55 Series					
205/55R16	91W	6.5	5.5 - 7.5	214	632
215/55R16	93W	7.0	6.0 - 7.5	226	642
225/55R16	95W	7.0	6.0 - 8.0	233	654

XL Extra Load
***** In Preparation

SYMBOLS KEY
SD SERVICE DESCRIPTION
 RECOMMENDED RIM WIDTH
 APPROVED RIM WIDTH - MIN/MAX
 SECTION WIDTH
 OVERALL DIAMETER

