



COOPERTIRES



Cooper Zeon 4XS

The **Cooper Zeon 4XS** is Cooper's first Premium UHP 4x4/SUV tyre developed in Europe to meet the demands of European 4x4s on European roads. The new asymmetrical tread is formulated to give enhanced wet grip, dry handling and tread wear.





Cooper Zeon 4XS

Series	Model	Speed Rating	Load Index	Min. Section Width	Max. Section Width	Overall Diameter
40 Series						
275/40R20XL ●	106Y	9.5	9.0 - 11.0	278	728	
45 Series						
275/45R19XL ●	108Y	9.0	8.5 - 10.5	273	731	
285/45R19 ●	107V	9.5	9.0 - 10.5	285	739	
275/45R20XL ●	110Y	9.0	8.5 - 10.5	273	756	
50 Series						
255/50R19 ●	103V	8.0	7.0 - 9.0	265	739	
255/50R19 ●	103W	8.0	7.0 - 9.0	265	739	
255/50R19XL ●	107Y	8.0	7.0 - 9.0	265	739	
55 Series						
255/55R18XL ●	109Y	8.0	7.0 - 9.0	265	737	
255/55R19 ●	107V	8.0	7.0 - 9.0	265	763	
60 Series						
235/60R18 ●	103V	7.0	6.5 - 8.5	240	739	

XL	Extra Load
●	Black Sidewall

SYMBOLS KEY	
SD	SERVICE DESCRIPTION
⌒	RECOMMENDED RIM WIDTH
⌒	APPROVED RIM WIDTH - MIN/MAX
⌒	SECTION WIDTH
⌒	OVERALL DIAMETER

Cooper Zeon 4XS

Premium UHP: Cooper's first Premium UHP 4x4/SUV tyre.

Y|W|V Speed Rated: Fitments include Porsche Cayenne, VW Touareg, BMW X5, Audi Q7, Volvo XC90 and Mercedes M-Class.

Rim Protection: Extends beyond the rim flange protecting against rim damage when a wheel scuffs a kerb.

Asymmetrical 'Rib' Tread Design: Offers three distinct performance attributes; open inner shoulder designed to enhance wet grip, wide circumferential grooves in the centre help resist aquaplaning and solid outer shoulder optimise dry handling.

FCST – Fully Coupled Silica Tread Technology: Formulated to give enhanced wet grip and tread wear.

OPT – Optimised Polymer Technology: To promote fuel saving, wet traction and wear.

Tread Pattern: Designed using Cooper's proven high performance car tyre technology to ensure quiet running.

Meets European legislation for clean oil and S-marked: The first Cooper 4x4 tyre to be developed outside the US, the 4XS is a European tyre developed specifically to meet the demands of European 4x4s on European roads.

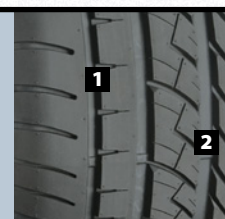
RATING	KM/H	MPH
N	140	87
Q	160	99
R	170	106

RATING	KM/H	MPH
S	180	112
T	190	118
H	210	130

RATING	KM/H	MPH
V	240	149
W	270	168
Y	300	186

1 Outer Tread: High lateral support for cornering and handling.

2 Inner Tread: Improved aquaplaning resistance during wet handling



For speed symbols V,W & Y load capacity reductions of up to 15% apply, above 210 Km/h for V-rated tyres, 240 Km/h for W-rated tyres & 270 Km/h for Y-rated tyres. Please consult Cooper Tire & Rubber Company for further information.

