



COOPERTIRES

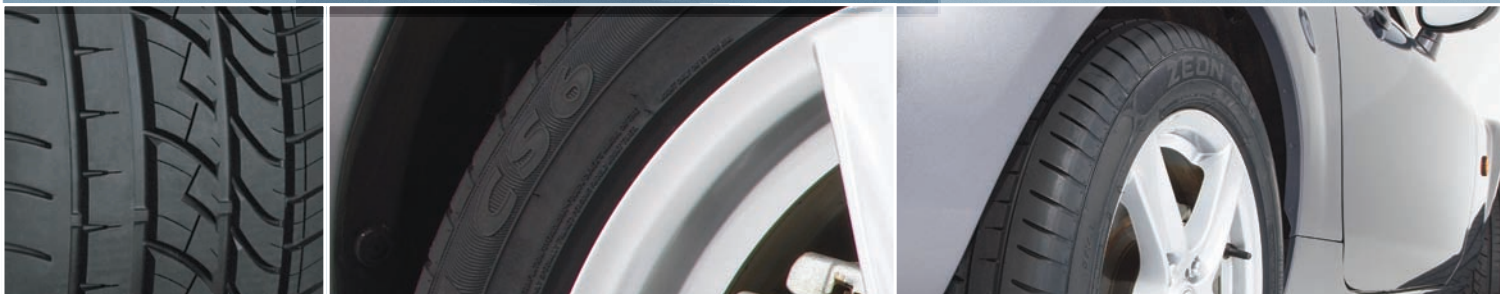


Cooper Zeon CS6

The **Cooper Zeon CS6** features an asymmetric 'rib' tread pattern to balance tread wear, minimise road noise and ensure effective rain water clearance to improve the wet grip. A new silica tread compound helps to extend the tread life. The updated construction has resulted in a lighter tyre that offers less rolling resistance promoting sharper handling. Available in 15" to 18" diameters and in V,W and Y speed ratings.







# Cooper Zeon CS6

**Asymmetric 'Rib' Tread Pattern:** Balanced tread wear. Optimised noise generation – quiet running.

Excellent water clearing properties.

**New Silica Tread Compound:** Enhanced wet grip – both braking and handling. Up to 12% longer tread wear than its predecessor.

**Upated Tyre Construction:** Lighter weight, compared to its predecessor. Lower rolling resistance, compared to its predecessor. Sharp handling.

**Functional Rim Flange Protectors:** in all sizes help protect alloys against kerb damage.

**Available in 15" to 18" Rim Diameters**

**V, W and Y Speed Ratings**

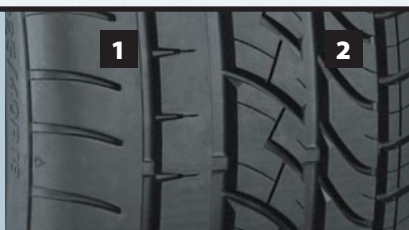
RATING	KM/H	MPH
N	140	87
Q	160	99
R	170	106

RATING	KM/H	MPH
S	180	112
T	190	118
H	210	130

RATING	KM/H	MPH
V	240	149
W	270	168
Y	300	186

**1 Outer Tread:** High lateral support for cornering and handling.

**2 Inner Tread:** Improved aquaplaning resistance during wet handling



For speed symbols V,W & Y load capacity reductions of up to 15% apply, above 210 Km/h for V-rated tyres, 240 Km/h for W-rated tyres & 270 Km/h for Y-rated tyres. Please consult Cooper Tire & Rubber Company for further information.



## Cooper Zeon CS6

40 Series					
<b>225/40R18XL</b>	92W	8.0	7.5 - 9.0	230	637
45 Series					
<b>195/45R16</b>	80V	6.5	6.0 - 7.5	195	582
<b>195/45R16 XL</b>	84V	6.5	6.0 - 7.5	195	582
<b>215/45R17</b>	87W	7.0	7.0 - 8.0	213	626
<b>215/45R17XL</b>	91W	7.0	7.0 - 8.0	213	626
<b>225/45R17</b>	91Y	7.5	7.0 - 8.5	225	634
<b>225/45R17XL</b>	94V	7.5	7.0 - 8.5	225	634
<b>225/45R17XL</b>	94W	7.5	7.0 - 8.5	225	634
<b>235/45R17</b>	94W	8.0	7.5 - 9.0	236	644
<b>235/45R17</b>	94Y	8.0	7.5 - 9.0	236	644
<b>235/45R17XL</b>	97W	8.0	7.5 - 9.0	236	644
50 Series					
<b>205/50R15</b>	86V	6.5	5.5 - 7.5	214	587
<b>205/50R16</b>	87W	6.5	5.5 - 7.5	214	612
<b>205/50R16</b>	87V	6.5	5.5 - 7.5	214	612
<b>225/50R16</b>	92W	7.0	6.0 - 8.0	233	632
<b>225/50R16</b>	92V	7.0	6.0 - 8.0	233	632
<b>205/50R17XL</b>	89V	6.5	5.5 - 7.5	214	638
<b>205/50R17XL</b>	93W	6.5	5.5 - 7.5	214	638
<b>215/50R17</b>	91W	7.0	6.0 - 7.5	226	648
55 Series					
<b>185/55R15</b>	82V	6.0	5.0 - 6.5	194	585
<b>195/55R15</b>	85V	6.0	5.5 - 7.0	201	595
<b>195/55R16</b>	87V	6.0	5.5 - 7.0	214	632
<b>205/55R16</b>	91W	6.5	5.5 - 7.5	214	632
<b>205/55R16</b>	91V	6.5	5.5 - 7.5	214	632
<b>205/55R16XL</b>	94V	6.5	5.5 - 7.5	214	632
<b>215/55R16</b>	93V	7.0	6.0 - 7.5	226	642
<b>215/55R16</b>	93W	7.0	6.0 - 7.5	226	642
<b>215/55R16</b>	93Y	7.0	6.0 - 7.5	226	642
<b>215/55R16XL</b>	97W	7.0	6.0 - 7.5	226	642
<b>225/55R16</b>	95V	7.0	6.0 - 8.0	233	654
<b>225/55R16</b>	95W	7.0	6.0 - 8.0	233	654
<b>225/55R16</b>	95Y	7.0	6.0 - 8.0	233	654
<b>225/55R17XL</b>	101W	7.0	6.0 - 8.0	233	680
60 Series					
<b>195/60R15</b>	88V	6.0	5.5 - 7.0	201	615
<b>205/60R15</b>	91V	6.0	5.5 - 7.5	209	627
<b>205/60R16</b>	92V	6.0	5.5 - 7.0	209	652
<b>215/60R16XL</b>	99V	6.5	6.0 - 7.5	221	664
65 Series					
<b>195/65R15</b>	91V	6.0	5.5 - 7.0	201	635

**XL** Extra Load

### SYMBOLS KEY

- SERVICE DESCRIPTION
- RECOMMENDED RIM WIDTH
- APPROVED RIM WIDTH - MIN/MAX
- SECTION WIDTH
- OVERALL DIAMETER