

  
**COOPERTIRES**



Discoverer S/T

The **Discoverer S/T** is a true off-road performer that is built-to-last on-road. It provides long, even tyre wear in town or motorway driving and will work miracles in the mud.





# Discoverer S/T

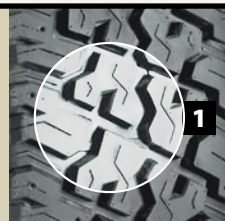
- Large, Beefy Tread Elements:** Designed for off-road applications while providing long, even wear for road use.
- All-Weather Tread Compound:** Provides excellent performance during all seasons, on or off road and is studable.
- Optimized Tread Profile:** Distributes contact evenly across the tread for balanced wear.
- Bevelled Treadblock Edges:** Fights irregular wear and improves self-cleaning capabilities.
- Staggered Tread Elements:** Breaks up harmonic pitch, significantly reducing tyre noise.
- Full Size Range:** Wide range of sizes available to fit SUV's and light truck.

RATING	KM/H	MPH
<b>N</b>	<b>140</b>	<b>87</b>
<b>Q</b>	<b>160</b>	<b>99</b>
R	170	106

RATING	KM/H	MPH
<b>S</b>	<b>180</b>	<b>112</b>
<b>T</b>	<b>190</b>	<b>118</b>
H	210	130

RATING	KM/H	MPH
V	240	149
W	270	168
Y	300	186

**1 Deep Tread And Scalloped Shoulder Design:** Improves traction in soft surfaces.



**40%** ON ROAD  
**60%** OFF ROAD

For speed symbols V,W & Y load capacity reductions of up to 15% apply, above 210 Km/h for V-rated tyres, 240 Km/h for W-rated tyres & 270 Km/h for Y-rated tyres. Please consult Cooper Tire & Rubber Company for further information.

SYMBOLS KEY	
* In Preparation	SD SERVICE DESCRIPTION
XL Extra Load	RECOMMENDED RIM WIDTH
● Black Sidewall	APPROVED RIM WIDTH - MIN/MAX
W Outline White Letter	SECTION WIDTH
◆ Not illustrated	OVERALL DIAMETER
M+S RATED	

## Discoverer S/T

60 Series					
275/60R20XL ●	119S	8.0	7.5 - 9.5	279	838
65 Series					
LT275/65R18 W	113/110R	8.0	7.5 - 9.5	279	815
LT275/65R18 W	123/120Q	8.0	7.5 - 9.5	279	815
70 Series					
205/70R15 W	96T	6.0	5.0 - 7.0	209	669
235/70R16 W	105S	7.0	6.0 - 8.0	240	736
255/70R16 W	111S	7.5	6.5 - 8.5	260	764
265/70R16 W	112S	8.0	7.0 - 9.0	272	778
245/70R17	110S	7.0	6.5 - 8.0	248	776
LT305/70R16 W	118/115N	9.0	8.0 - 10.0	311	834
LT245/70R17 W	119/116Q	7.0	6.5 - 8.0	248	776
LT265/70R17 W	112/109Q	8.0	7.0 - 9.0	272	804
LT265/70R17 W	121/118Q	8.0	7.0 - 9.0	272	804
LT275/70R17 W	114/110Q	8.0	7.0 - 9.0	279	818
LT285/70R17 W	121/118Q	8.5	7.5 - 9.5	292	832
LT275/70R18 W	125/122Q	8.0	7.0 - 9.0	279	843
75 Series					
235/75R15 W	105S	6.5	6.0 - 8.0	235	733
235/75R15XL W	109S	6.5	6.0 - 8.0	235	733
245/75R16 W	111S	7.0	6.5 - 8.0	248	774
265/75R16 W	116S	7.5	7.0 - 9.0	267	804
LT235/75R15 W	104/101Q	6.5	6.0 - 8.0	235	733
LT225/75R16 ●	115/112N	6.0	6.0 - 7.5	223	744
LT245/75R16 ●	120/116N	7.0	6.5 - 8.0	248	774
LT265/75R16 W	112/109N	7.5	7.0 - 9.0	267	804
LT265/75R16 W	119/116N	7.5	7.0 - 9.0	267	804
LT265/75R16 W	123/120N	7.5	7.0 - 9.0	267	804
LT285/75R16 W	122/119N	8.0	7.5 - 9.5	286	834
LT315/75R16 W	121N	8.5	8.0 - 10.5	313	878
LT245/75R17 W	121/118Q	7.0	6.5 - 8.0	248	800
80 Series					
205/80R16XL W	104T	5.5	5.0 - 7.0	203	734
LT235/80R17 W	120/117Q	6.5	6.0 - 7.5	235	808
85 Series					
LT215/85R16 ●	115/112N	6.0	5.5 - 7.0	216	772
LT235/85R16 ●	120/116N	6.5	6.0 - 8.0	235	806
LT255/85R16 W	119/116N	7.0	6.5 - 8.0	255	840
High-Flotation Series					
30x9.50R15LT W	104Q	7.5	6.5 - 8.5	245	745
31x10.50R15LT W	109Q	8.5	7.0 - 9.0	272	774
33x12.50R15LT W	108Q	10.0	8.5 - 11.0	314	829
35x12.50R15LT W	113Q	10.0	8.5 - 11.0	327	886
33x12.50R17LT W	114Q	10.0	8.5 - 11.0	314	829
35x12.50R17LT W	119Q	10.0	8.5 - 11.0	327	886

## Discoverer S/TC♦

70 Series					
LT265/70R17 W	121/118Q	8.0	7.0 - 9.0	272	804
75 Series					
LT245/75R16 ●	120/116N	7.0	6.5 - 8.0	248	774
LT265/75R16 W	123/120N	7.5	7.0 - 9.0	267	804
LT285/75R16 W*	122/119Q	8.0	7.5 - 9.5	286	834
85 Series					
LT235/85R16 ●	120/116N	6.5	6.0 - 8.0	235	806

S/T-C TREAD COMPOUND INCREASES RESISTANCE TO CUTTING, CHIPPING AND TEARING.