

Get into the World of General Tire

Superior on tracks, powerful off the road ...

The tire that meets every challenge:

GRABBER HTS



The Grabber HTS combines safety with enjoyment fun at the wheel – both off the road and on asphalt. General Tire's innovative tread pattern design ensures a perfect blend of comfort, performance and ruggedness. This tire manages superbly, responding to the demands placed by the ground surface whatever the weather. Low rolling resistance reduces wear and fuel consumption. Driving with the Grabber HTS is an all-round positive experience!

Vehicle Examples

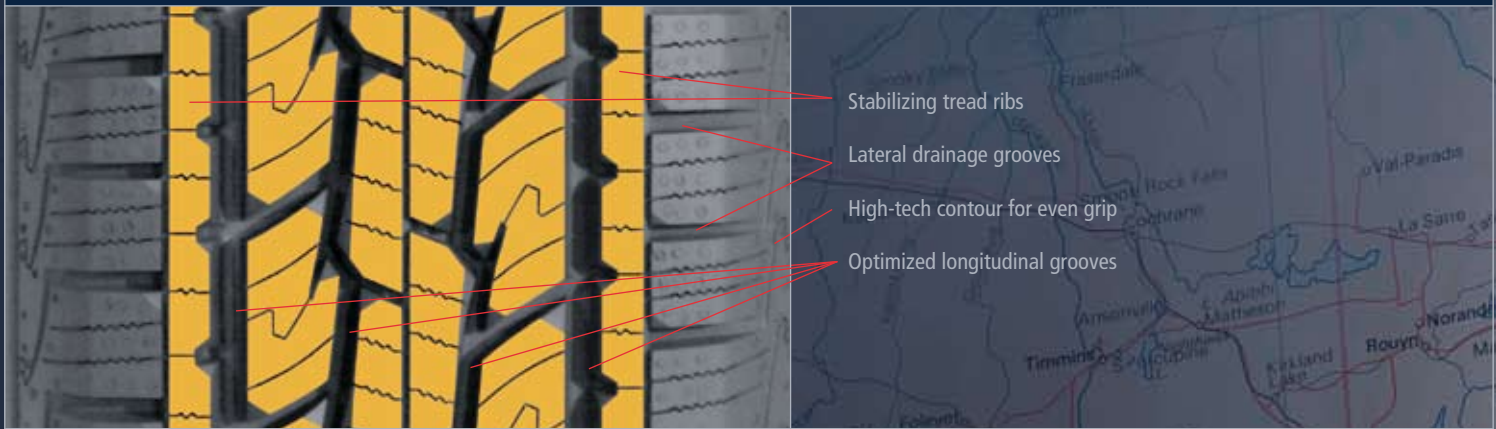
BMW	LAND ROVER
CHRYSLER	MERCEDES
FORD	TOYOTA
KIA	VOLKSWAGEN



The tread pattern, based on the latest technological findings, ensures efficient off-road performance and good track holding on asphalt.

GRABBER HTS – ready to roll on any type of ground

Intelligent Duragen technology means the Grabber HTS sets new benchmarks. The tire's innovative tread pattern design makes it extremely flexible, whatever the conditions. This is the right tire for all those drivers who mainly use the road, but also want to be able to go off-road if necessary.



Performance features

- 1 DURAGEN TECHNOLOGY
- 2 Groove geometry with a flexible response
- 3 Lateral drainage grooves
- 4 Optimized longitudinal grooves
- 5 High-tech contour

Benefits

- 1 Designed according to the latest technological standards, the tread pattern ensures performance in extreme conditions and track holding on all asphalt surfaces.
- 2 Thanks to its stabilizing tread ribs before the shoulder section, the Grabber HTS sits firmly and safely on the road and offers outstanding steering precision.
- 3 Lateral grooves channel water efficiently out of the tread, enhance traction and reduces aquaplaning risk.
- 4 Longitudinal grooves reduce braking distances, improving acceleration and steering performance on slippery ground.
- 5 The tread area sits evenly on the ground, reducing fuel consumption and thus CO² emissions.

PATTERN	RIM DIA-METER	SIZE	SPEED/LOAD INDEX	LOAD RANGE	RIM PROTECTION	PERMITTED RIMS WIDTH		TYRE DIMENSIONS		TREAD PATTERN DEPTH (MM)	ROLLING CIRCUM-FERENCE 1,5%-2,5% (MM)
						MIN. (INCH)	MAX.	MAX. IN SERVICE OUTER-Ø (MM)	ON MEASURING RIM WIDTH (MM)		
HTS	15"	235/75 R 15	109 T	XL	OWL	6.0	8.0	747	244	9.4	2236
		265/75 R 15	112 S		OWL	7.0	9.0	795	278	9.4	2376
		225/70 R 15	100 T		OWL	6.0	7.5	709	237	9.4	2125
		235/70 R 15	103 T		OWL	6.0	8.0	725	250	9.4	2170
		255/70 R 15	108 S		OWL	6.5	8.5	753	270	9.4	2254
		31x10.50 R 15 LT	109 Q		OWL	7.0	9.0	791	278	9.4	2365
	16"	LT235/85 R 16	120/116 Q	OWL	6.0	7.5	822	249	9.4	2458	
		225/75 R 16	104 S	OWL	6.0	7.5	758	232	9.4	2269	
		LT225/75 R 16	115/112 S	BSW	6.0	7.5	758	236	9.4	2269	
		235/75 R 16	108 S	OWL	6.0	8.0	772	244	9.4	2312	
		245/75 R 16	111 S	OWL	6.5	8.0	788	252	9.4	2361	
		LT245/75 R 16	120/116 S	OWL	6.5	7.5	788	263	9.4	2361	
		265/75 R 16	116 T	OWL	7.0	9.0	820	278	9.4	2450	
		LT265/75 R 16	123/120 Q	OWL	7.0	8.0	820	283	9.4	2450	
		255/70 R 16	111 S	OWL	6.5	8.5	778	270	9.4	2330	
		235/65 R 16	103 T	BSW	6.5	8.5	724	240	9.4	2171	
	17"	235/75 R 17	109 S	BSW	6.0	8.0	798	235	9.4	2391	
		235/70 R 17	111 T	XL	OWL	6.0	8.0	776	250	9.4	2325
		265/70 R 17	113 S		BSW	7.0	9.0	818	283	9.4	2450
		245/65 R 17	107 T		OWL	7.0	8.5	762	258	9.4	2290
18"	265/70 R 18	116 S	OWL		7.0	9.0	843	272	9.4	2528	
	265/60 R 18	110 T	OWL	7.5	9.5	787	283	9.4	2365		
	275/60 R 18	113 H	BSW	7.5	9.5	801	290	9.4	2400		
20"	275/60 R 20	119 S	XL	BSW	7.5	9.5	852	279	9.4	2556	